

UIC Railway Asset Management Global Conference 2017

4 - 6 OCTOBER 2017
UIC HEADQUARTERS, PARIS

Leadership

Jude Carey – Iarnród Éireann

Asset Management

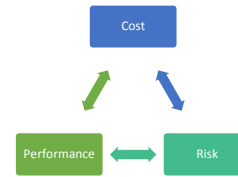


Excellent Asset Management comes through an effective and committed executive leadership and a commitment to Asset Management.



Business success is a direct reflection of the leaders that oversee the organisation.

Asset Management



Implementing Asset Management can take one of two approaches



Engineering

Will it be a source of initiatives and continuous projects or

Management of Assets



Business

Whole Organisation approach in line with ISO 55000

Asset Management

Stakeholders
Funders, Customers, Board, Operators

- Company Strategy
- 5 year plan
- Multi Annual Contract
- Track Access agreement



- Safety
- Commercial
- Reputation
- Environment
- Relationship with stakeholders

- Totex spend (M&R)
- Replacement Value
- Steady State Spend
- Surplus/Shortfall of funding
- Benchmarked cost of activity

- Asset Condition
- Remaining Life
- Delay Minutes
- Punctuality/Availability
- Journey Time
- Capacity / Frequency
- Customer Satisfaction

Value



Cost



Performance



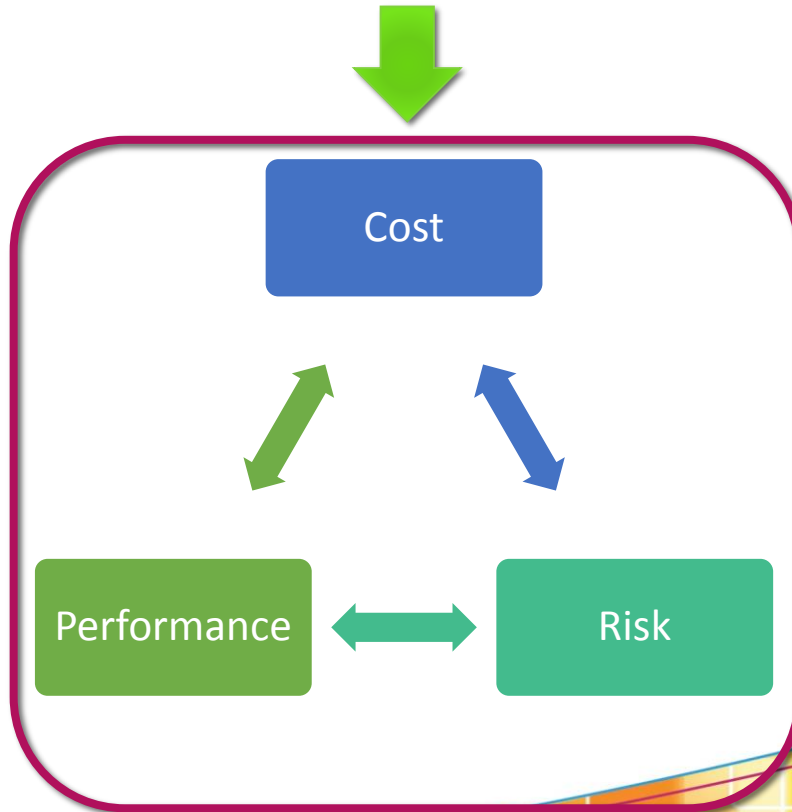
Risk

CEO
CFO
Head of Safety
CCE
CESET
Head of RU
Board Member

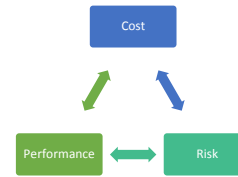
Value

Increase
Sanding and
Gel
Applicators
for Leaf Fall

CEO
CFO
Head of Safety
CCE
CESET
Head of RU
Board Member



Asset Management



Implementing Asset Management can take one of two approaches



Engineering

Will it be a source of initiatives and continuous projects or

Management of Assets



Business

Whole Organisation approach in line with ISO 55000

Asset Management

Asset Management



If we select the Business Approach,

The CEO is critical to its success as a leader who endorses and champions this approach

A convincing business case is usually critical for a CEO to endorse such Asset Management approach.

In the absence of this endorsement a full Business implementation of Asset Management is unlikely to be achieved.

Requires a business case built on Value

How would you spend the last €5m

**Renew a
bridge**

**Signaling
System three
years beyond
end of life**

**Line Speed
Improvements**

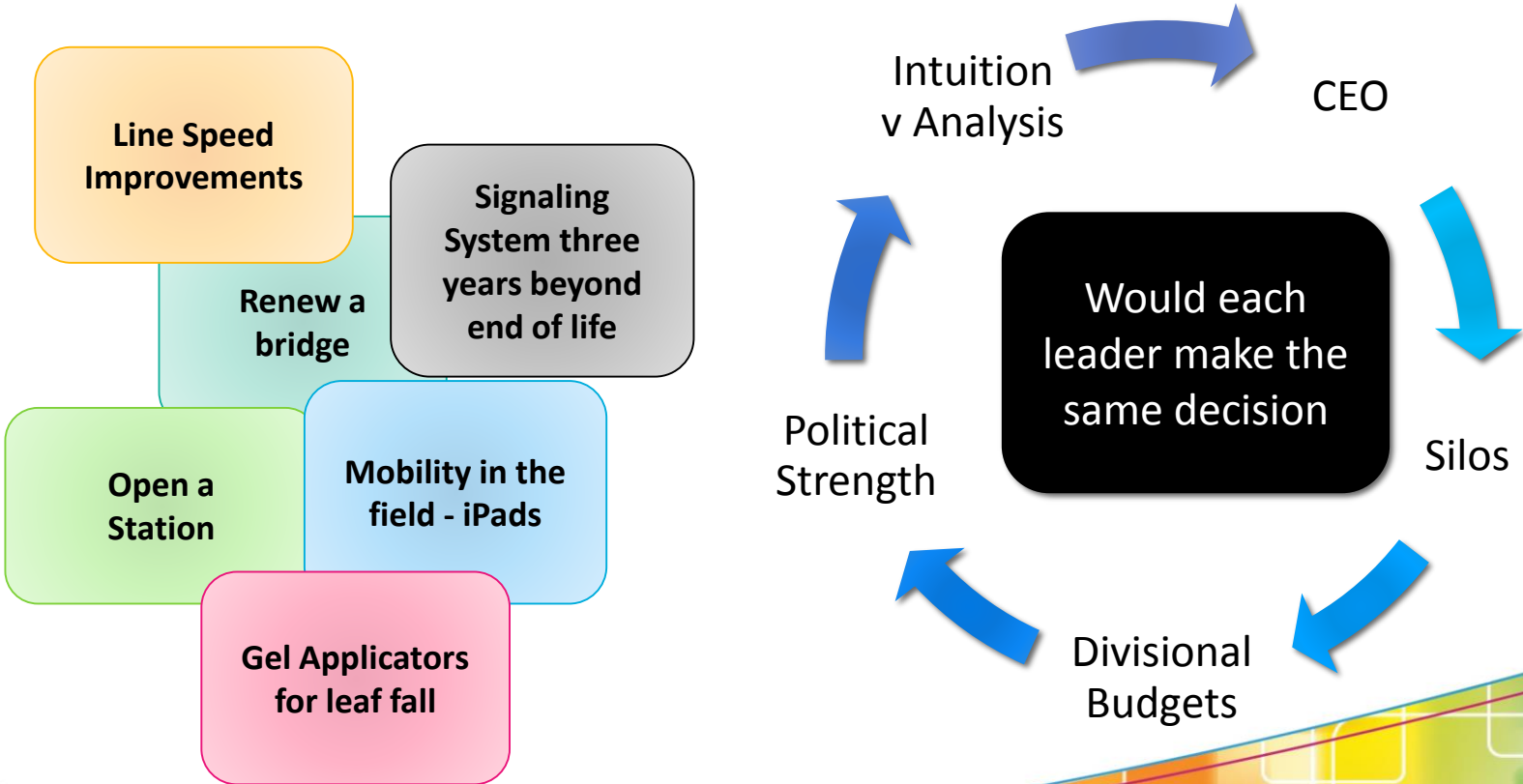
**Open a
Station**

**Mobility in
the field -
iPads**

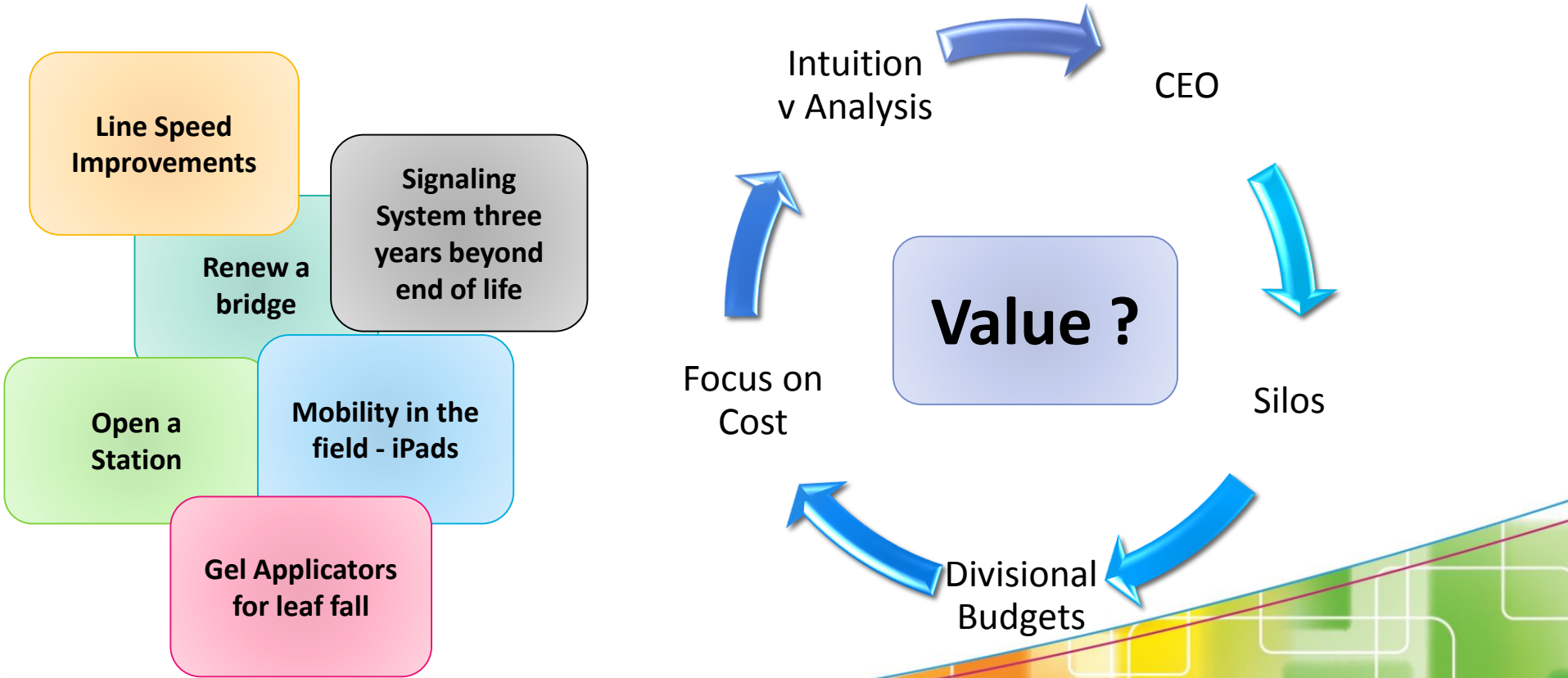
**Sanding & Gel
Applicators
for leaf fall**

The decision must be built on Value

How would you spend the last €5m

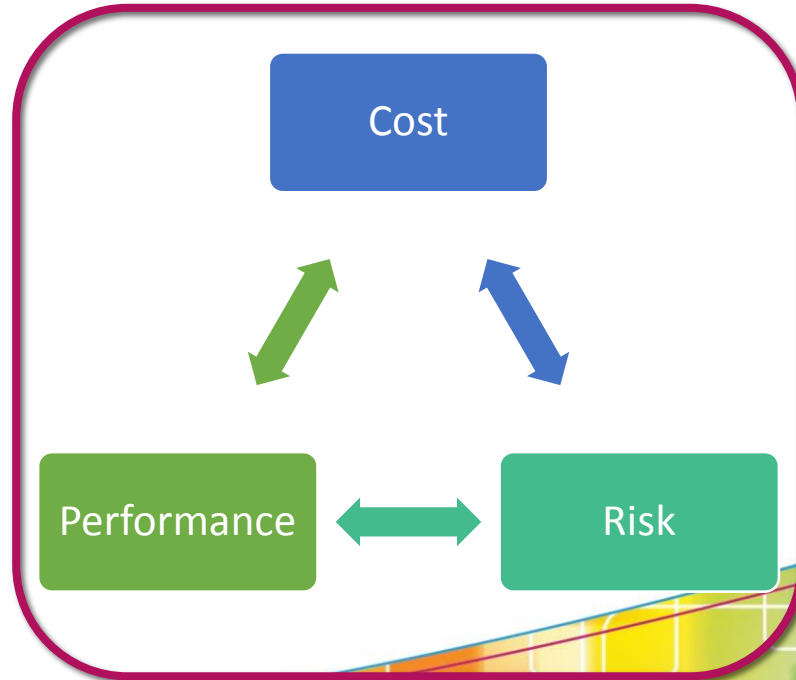


How would you spend the last €5m



Head of Commercial Asset Management

My focus is on
Value



Head of Commercial Asset Management

Would you know how to recruit and
train one

Would you delegate to your existing
finance team to recruit one





Asset Management Leadership

To Summarise

UIC Railway Asset Management Global Conference 2017

4 - 6 OCTOBER 2017
UIC HEADQUARTERS, PARIS

Leadership

Thank You

Jude Carey
Head of Commercial Asset Management
Iarnród Éireann